



WILLIAMS  
CENTER  
FOR THE  
ARTS  
15 / 16

# Williams Center for the Arts 2015/16

## September

- 1 Post/Present: Selections from the Lafayette Art Collection opens
- 11 Barry Harris Trio with special guests Jon Irabagon and Marquis Hill
- 16 Mark Morris Dance Group
- 18 Cimarrón
- 27 PRISM Q&A

## October

- 6 Julian Sands / A Celebration of Harold Pinter
- 14 Seán Cúran Company with Utahtokai Plac Ensemble
- 16 In the Line of Duty: Collecting African American Art opens
- 16 Cécile McLorin Salvant
- 20 Riyaz Qawwali

## November

- 17 Takács Quartet
- 21 The Cashore Marionettes

## December

- 14 Sancho: An Act of Remembrance

## January

- 18 Gail Studera / In Time: Out of Time: Woven Photo Collages opens
- 29 Orpheus Chamber Orchestra with pianist Kiria Bullenstvedt

## February

- 2 Filter Theatre / Twelfth Night
- 12 Vox Luminis
- 20 The Bill Goodwin Experience
- 24 BODYTRAFFIC
- 27 The Pigroving

## March

- 4 Tiffany Glass: Painting with Color and Light opens
- 5 Dada
- 13 Kenny Endo Contemporary Ensemble
- 30 New York NearFuturists

## April

- 30 Bill Charlap

## May

- 8 Philippe Jaroussky

INDELIBLE  
BEAUTIFUL  
STARTLING  
TIMELESS  
DISTINGUISHED  
INCOMPARABLE  
OUTSTANDING  
2015/16

## Dear Friends:

Welcome to the 2015/16 season at the Williams Center for the Arts, the 33rd year of providing outstanding encounters with some of the most imaginative minds on the planet. In the Performance Series and Gallery, and in concerts and productions by the Lafayette College Departments of Music and Theater, we stand firm in our commitment to presenting a rich array of experiences designed to inspire and delight.

This year we expand the artistic palette of the Performance Series with our inaugural Theater series: among these premier events are Julian Sands' homage to poet and playwright Harold Pinter, and Filter Theatre's *Twelfth Night*, which will demonstrate, once again, why the Bard is relevant, adaptable, and enduring. The Theater series includes two superior puppetry artists: Joseph Cashore, with his exquisitely engineered marionettes;

and Robin Frohndt's bunraku-inspired urban morality play, *The Pigroving*. We're excited to launch our new Family Matinees series with specially scheduled Saturday performances of these two shows.

The Williams Center will be further distinguished by work from visionary choreographer Mark Morris, the incomparable Takács Quartet, Orpheus Chamber Orchestra

with pianist Khatia Buniatishvili, and an exclusive appearance by French countertenor Philippe Jaroussky. In tribute to the late Mulgrew Miller, Barry Harris and Bill Charlap offer their perspectives on the jazz keyboard, and the next generation of jazz masters comes to the fore with award-winning vocalist Cécile McLorin Salvant. World music on our stage arrives from Ireland, Japan, Colombia, South Asia, and the Kyrgyz Republic.

Discover for yourself how a season like this can be avant-garde and classical, beautiful and startling, fresh and timeless. These artists will leave an indelible impression on you, and I hope that their performances resonate for a long time to come.

I look forward to seeing you at the Williams Center!

Hollis Ashby  
Executive and Artistic Director of the  
Performance Series



Past/Present:  
Selections from  
the Lafayette Art  
Collection  
September 1—October 4

The Williams Center Gallery features paintings, sculpture, and works on paper from Lafayette's fine collection of art.

*NOCTURN*, a companion exhibition at the Grossman Gallery, presents works from the photography collection.

"There is something beautiful about the movement of tones between black and white in an old photograph that can evoke in the viewer an introspective sensation." —Gail Skudera

Gail Skudera /  
In Time, Out of  
Time: Woven  
Photo Collages  
January 18—February 28

Gail Skudera's work incorporates her understanding of traditional textile processes with her painting background and love for antique black and white photographs; her collaged works combine pattern, weave structures with photo-transferred images using both on- and off-loom weaving methods. With paint, washes and glazes, thread and collected objects, as well as non-traditional printing processes, she creates complex images that focus on portraits or the human figure in various environments. The juxtaposition of time past—the photographs—with the present, references the passage of time.

In the Line of Duty: Collecting  
African American Art  
The William C. Robinson Family Collection  
of African American Art  
October 16—December 12

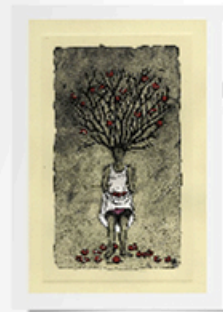
The relationship between collector and artist—frequently founded in shared beliefs and passions connected to the creative enterprise—evolves as the patron witnesses first-hand the struggle the artist faces. This is often particularly true in the case of African American artists, who seek to assert their voices among the larger chorus of artists and within the art world in general. *In the Line of Duty* includes paintings, sculpture, and works on paper by Moor Brooks, Selma Burke, Elizabeth Catlett, David C. Driskell, Sam Gilliam, Charles E. Porter, Charles Sebree, and Charles W. White.

WILLIAMS CENTER ///  
GALLERY

Tiffany Glass: Painting with  
Color and Light  
March 4—June 4

Two superb art glass windows produced at Tiffany Glass and Decorating Company were commissioned for Lafayette College in the late 19th century: *Alcibiades and Charioteer* (1898) and *The Death of Sir Philip Sidney* (1899). Special Collections/Archives and the Art Galleries and Art Collections together present "Tiffany at Lafayette": examining the history and artistry of the windows. *Tiffany Glass: Painting with Color and Light*, from the Neustadt Collection, illustrates Louis Comfort Tiffany's masterful use of opalescent glass to achieve painterly results.

The exhibition is made possible by Elm Knott Burke '76 and Raymond Burke '76, Stillman Library presents archival materials documenting the history of the windows, and L.C. Tiffany's relationship with Lafayette.



Clockwise from top left: Martha Jackson Jarvis, *Ancestor's Bones: Five Spirits*, 2011. Mixed-media drawing, Lafayette College Art Collection. From *Past/Present* / Alison Starr, Fall 2014. Biking on a dirt road with a friend. Experimental Printmaking Institute Collection, Lafayette College. From *Past/Present* / Gail Skudera, *The Changing*, 2009–2011. Women mixed-media. Courtesy of the artist. / Tiffany Glass and Decorating Company, *Alcibiades and Charioteer*, 1898. leaded glass. Frederick Wilson, design. Detail of *Charioteer*, Lafayette College Art Collection, Stillman Library. / Charles Sebree, *Woman in Orange*, 1948. Mixed media on board. Courtesy of the William C. Robinson Family Collection, photography by Jason Stiles, LLC. From *In the Line of Duty* ///